



# WELCOME TO OUR WILLAWONG DC

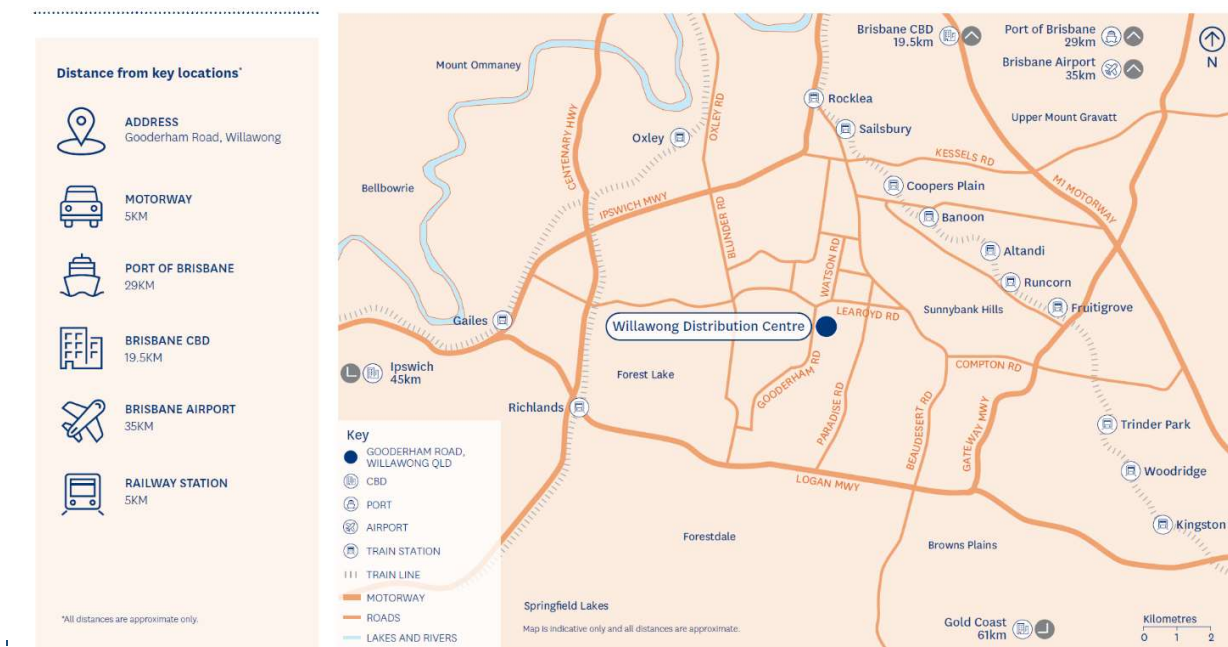


## LOCATION

SLA is pleased to advise that our brand-new distribution centre in Willawong is now open for trade. This 5-star energy efficient site was built by the Stockland Group in 2020, with the facility being specifically designed for 3PL fulfillment services.

The site address is Warehouse 3.1, 221 Gooderham Road, Willawong QLD 4110. Entry to the DC is off Logrunner Place.

## Great location with efficient and easy access



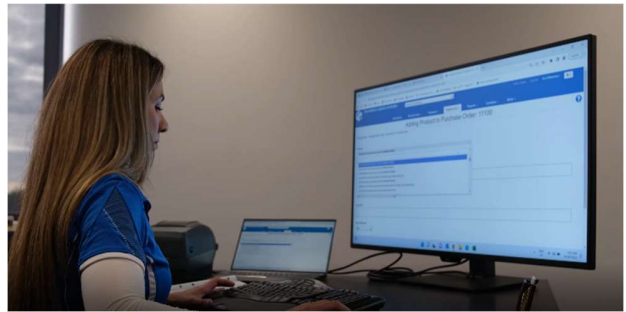
The SLA Willawong DC is in the southwestern part of Brisbane. It is close to the major retail distribution centres of Woolworths, Coles, Aldi, Metcash (IGA), Amazon and Costco.

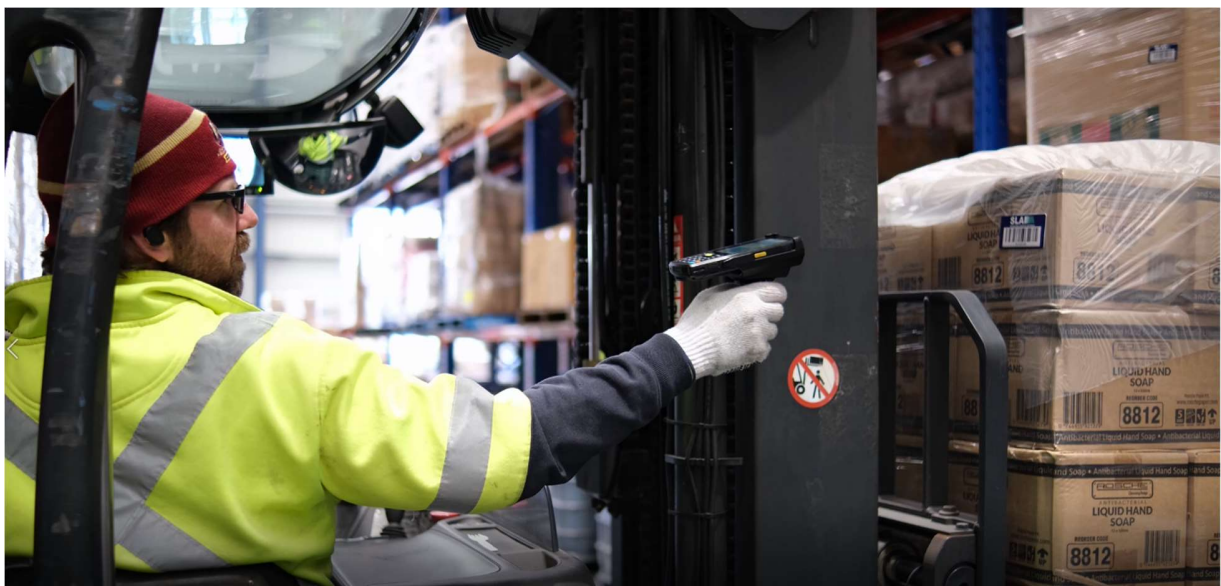
Interstate freighters can drop or collect from our centres without passing through tolls or heavy vehicle restriction zones. Three major arterial highways nearby enable multi route opportunities with limited traffic delays.

The facility has been purpose built for 3PL warehousing.

The addition of this facility brings our warehousing capacity up to 35,000 square meters.

SLA WILLAWONG DC







## **7 ways we benefit your business**

---

### ***1. Protect your initial capital***

You'll need to have a large amount of capital if you want to set up your own warehousing and distribution facility. Renting or purchasing warehouse space, employing, and managing people and renting or purchasing the equipment to handle goods takes significant capital expenditure – without any guarantee of return.

### ***2. Control the cost of your warehousing and labour***

Rather than paying for empty spaces or a seasonal inventory throughout the year, you simply pay for the space you use. Rather than paying an annual wage, you only pay for the time needed to perform the work.

### ***3. Lower the cost of your distribution***

By combining volumes from many customers, we can bring the unit rates down and this is passed on to individual customers, thus lowering distribution costs.

### ***4. Allow you to focus on the key areas of your business***

By outsourcing your workforce, warehouse, and distribution requirements it allows you to step back and view your operations from a distance, freeing up your time and energy, so that you can concentrate on developing your business and ensuring your clients are well looked after.

### ***5. More efficient stock keeping***

It is now an expectation of customers that they will always have instant access and complete traceability of their stock. SLA runs cloud-based software, so anyone with an internet access on any device can stay up to date with their stock movements.

### ***6. Conveniently cross dock your freight and provide back loading***

Our distribution centres are strategically located next to the major highways that service Brisbane, the Gold and Sunshine Coasts. We can receive interstate freight and deliver it to southeast Queensland businesses. Times slots at the major DCs are no problem. We can source back load prices to Sydney and Melbourne, reducing your distribution costs.

### ***7. Take advantage of our years of experience***

With over twenty years' experience, we know how to get things done in the logistics industry. We understand the compliance requirements of doing business with both the government and private sectors.

## Our Vehicle Fleet

Our modern vehicle fleet is comprised of B Doubles, Semi-Trailers, Tautliners, Tailgate and small trucks that can dock to any retail location in Southeast Queensland.

We partner with transport service providers, including couriers for parcel/carton sized deliveries and service any destination in Australia.

We handle container cartage and unpacks.

We do a large amount of cross dock work for interstate freighters.

We use software – which enables us to monitor the location of our trucks at any time.



Navman Director Fleet Control Software – fully integrated with Carton Cloud

Driver on line hour books – for fatigue management

## Our People

Collectively, we have over 300 years' experience in Logistics within Australia. If we have not done it, it most likely has not been done before!

We are always looking at new technologies and more efficient ways of moving freight. Through our partnership with ECLIPs for example, we have introduced CROWS (Container Roll Out and Warehousing Systems) into the Australian market.

In addition to meeting our own needs, we also provide labour and specialists for a wide variety of roles. SLA have strong links to the Defense Force and we appreciate the service given to our country and where possible, source veterans to fulfil vacancies.



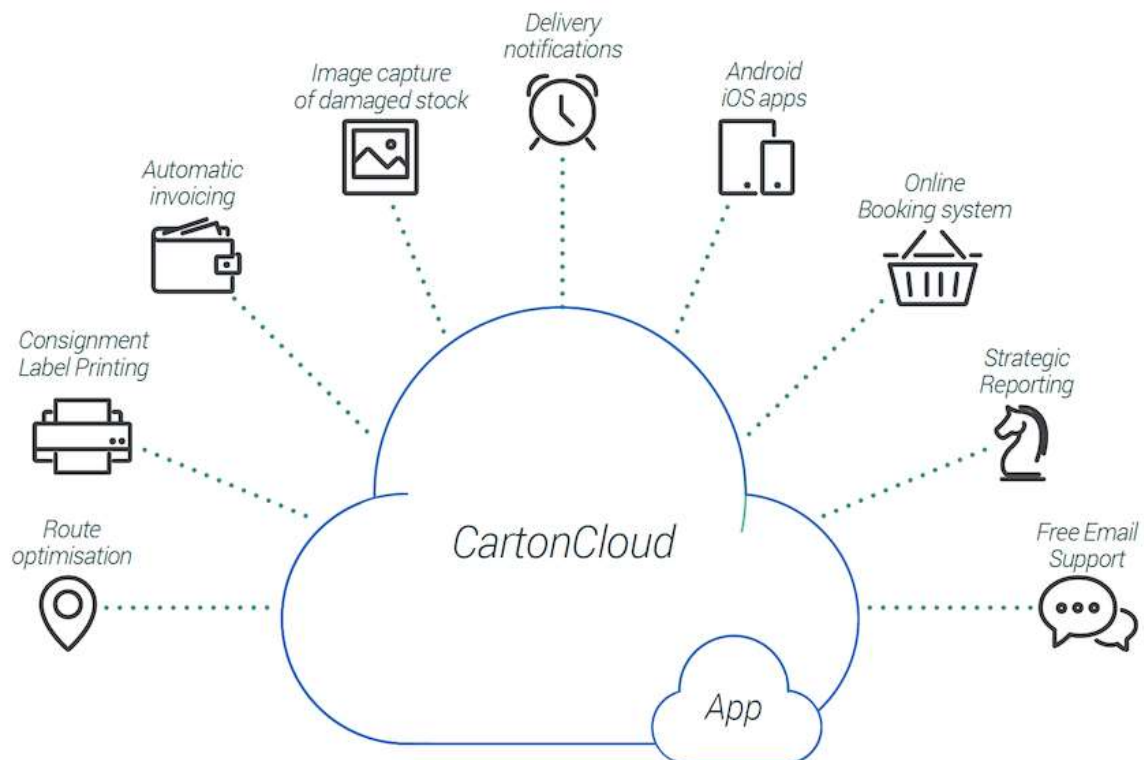
## Our Systems

With the emergence of online trading, SLA has remained at the forefront of technology by partnering with a cloud-based software company – Carton Cloud.

Carton Cloud enables SLA to seamlessly connect to online retail software platforms and all the major logistics software providers, thus allowing information to be passed between the systems without the need for re-keying.

CartonCloud also enables our customers to:

- ✓ View stock levels at any time and monitor the progress of Incoming and Outgoing orders.
- ✓ Pick and choose the stock you want sent to a customer with full control over Expiry Dates, Batch Numbers etc.
- ✓ Receive real-time email notifications when a Sale Order is packed, or when a discrepancy is found on incoming stock.
- ✓ Download PODs (Proof of Delivery documents) whenever you want – either by individual order number, or batch number (manifest).



With the use of Carton Cloud, SLA has a 100% online transport and warehousing management system that runs on twin servers and never goes down

## Company Details

---

Company Name:	Allanbee (101 Investments) Pty Ltd.		
Trading Name:	Specialised Logistics Australia		
ABN:	45 124 113 373	ACN:	124 113 373
Year Established:	1993		
Owners:	Timothy Michael Nichols and Malcom Neil Nichols		
Locations:	PRIMARY FACILITY 221 Gooderham Road, Willawong 4110 Warehouses 3.1, 2.2 and 2.3  SECONDARY FACILITY 30 Flint Street Inala 4077.		
Postal Address:	PO Box 280 Ellen Grove 4078		
Website:	<a href="http://www.specialisedlogistics.com.au">http://www.specialisedlogistics.com.au</a>		
Primary Contact:			
Name:	Tim Nichols		
Position title:	Managing Director		
E mail address:	<a href="mailto:tim@specialisedlogistics.com.au">tim@specialisedlogistics.com.au</a>		
Mobile Phone:	+61 (0) 455 880 228	Telephone:	07 3879 3500

